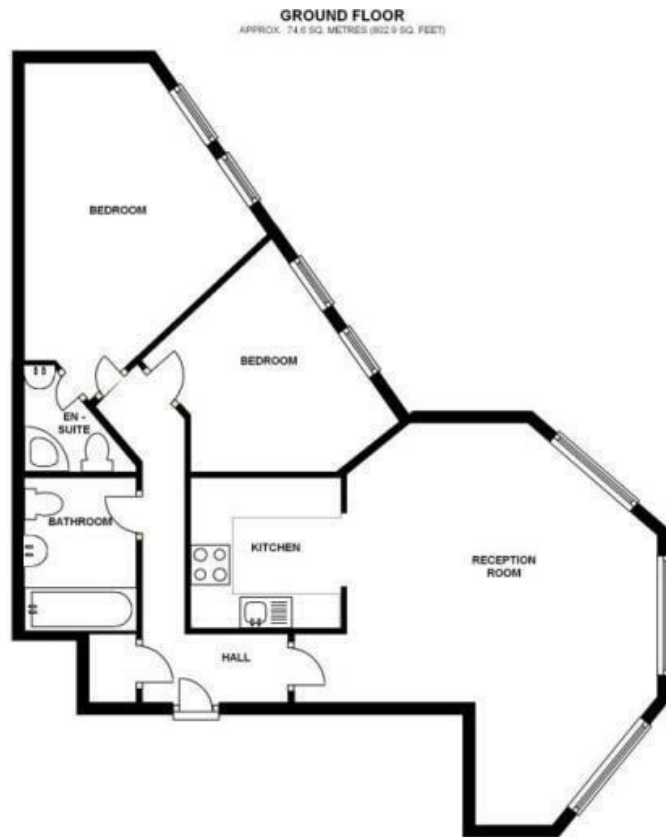


PER MONTH

£2,300 Per Month
St. Christophers Court

London, N19 5LT

EPC RATING: COUNCIL TAX BAND:



TOTAL AREA: APPROX. 74.6 SQ. METRES (802.9 SQ. FEET)
SKETCH PLAN NOT TO SCALE, FOR ILLUSTRATIVE PURPOSES ONLY

All measurements, walls, doors, windows, fittings, appliances their sizes and locations are shown conventionally and are approximate only and cannot be regarded as being a representation either by the seller or Wineworks. Plan produced using The Motive Agent.



Energy Efficiency Rating		Current	Potential
Very energy efficient - lower running costs			
(92 plus) A			
(81-91) B			
(69-80) C			
(55-68) D			
(39-54) E			
(21-38) F			
(1-20) G			
Not energy efficient - higher running costs			
England & Wales		EU Directive 2002/91/EC	



Agents Note: Whilst every care has been taken to prepare these particulars, they are for guidance purposes only. All measurements are approximate and are for general guidance purposes only and whilst every care has been taken to ensure their accuracy, they should not be relied upon and potential buyers/tenants are advised to recheck the measurements

Paul Simon
Estate agents

OFFICE ADDRESS
786-788 Green Lanes
London
N21 3RE

OFFICE DETAILS
0208 800 1155
management@paul-simon.co.uk